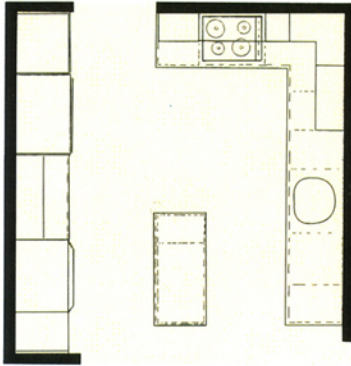


Artful Transformation

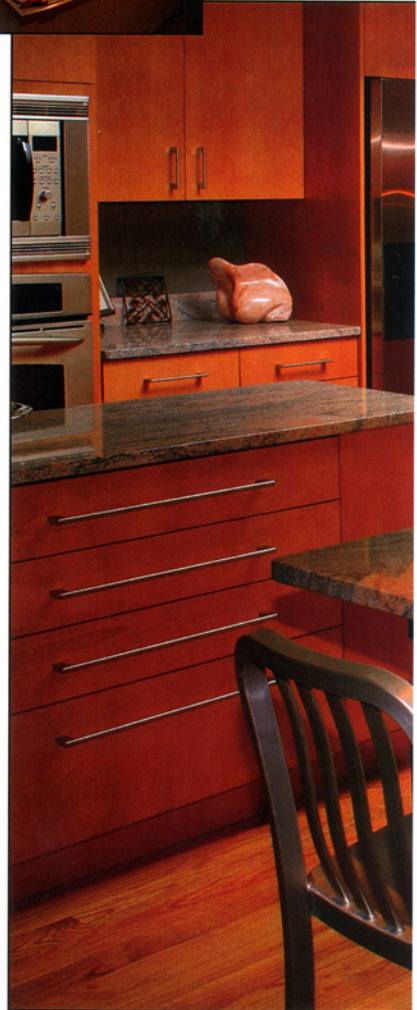
In a light-filled seaside home, the original kitchen failed to function effectively as an efficient workspace and as an enjoyable center of the home. The small work area was mostly closed off from exterior views and adjoining areas, limiting traffic flow, and the space was badly in need of modernization.



AFTER



Clean lines and the combination of sleek and textured surfaces reflect the personalities of this kitchen's owners – relaxed, quietly elegant, and comfortably modern.



- ◆ Part of a wall was removed to expose stunning views of the backyard and gardens.
- ◆ A central island, with loads of drawers, was added to provide extra workspace without inhibiting the movement of the couple, who both contribute to the cooking duties of the household. The custom designed drawers were configured to hold just about anything.
- ◆ Maple cabinets and granite surfaces were installed to complement the gorgeous natural views that now hang as the permanent backdrop to the new kitchen.



Design: Gaye Weatherly / Weatherly Tile & Stone
Photography: Jan D. Armor

Out of Place

Surrounded by undeveloped woodland acreage, a kitchen with a style dubbed "Retro Jet 707" by a friend of the owners, was out of place in their country classic home. Grey vinyl-clad cabinets, grey floor tiles, and dark wallpaper formed a look that was dark and inappropriate in the otherwise light, warm, and airy home. Even their realtor, who had built and lived in the house, apologized for the kitchen, saying, "I knew this was a mistake the minute the cabinets started to go up." In addition to its style faux pas, the kitchen's appliances were dated and inconveniently laid out, fluorescent lighting was inadequate, and available storage space did not meet the homeowners' needs. With a constrained budget and lots of creative planning, the kitchen was beautifully modified to reflect the style of the rest of the house while meeting the needs of the homeowners.



✦ To stay within a limited budget, the original space of the kitchen was maintained, keeping the existing placement of walls, windows, French doors to the deck, and other entries.

✦ The most notable change in the kitchen's layout was the repositioning of the double oven doors, which originally opened directly in front of the dining room's entry.

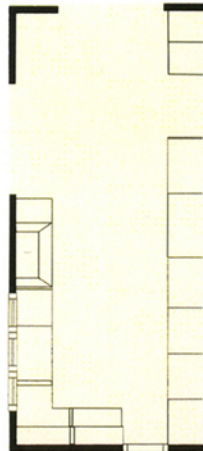
✦ Pristine white cabinetry with glass fronts was chosen to reflect natural light from the windows; and mouldings, ceiling, and walls were also painted white.

✦ The owners chose a custom farmhouse sink made from patterned stainless steel to add to the kitchen's contemporary country atmosphere. This same material was used in the stove's backsplash.

✦ Stunning granite was used for the countertops and backsplashes, adding texture and a focal point to the kitchen.

✦ Halogen and other white-light fixtures replaced fluorescent lighting.

AFTER



Oak flooring was installed in the renovated kitchen to unite the space with adjacent rooms in the house and to give it a warmer atmosphere.



"Azul Newport" granite features prominently in the renovated kitchen. The swirling blue, grey, and white pattern of the natural stone, with reflective mica and amber highlights remind the homeowners of the nearby ocean.

